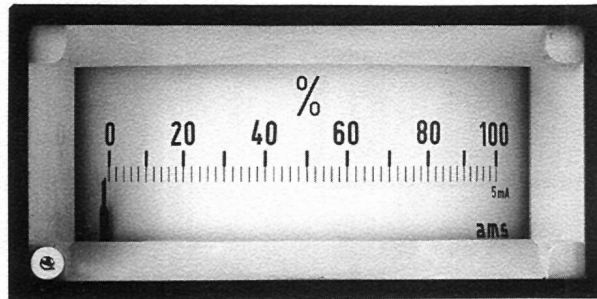


Rectangular Panel Meters



Moving coil edgewise meters Moving coil slim-line meters

- ☐ Edgewise meters in steel-sheet housing
- ☐ Slim-line meters in polycarbonate housing
- ☐ Available for mounting vertically or horizontally
- ☐ With built-in rectifier for AC input

RECTANGULAR PANEL METERS

Rectangular Panel Meters

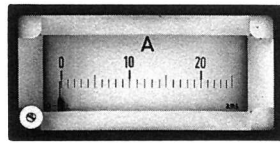
**Edgewise moving coil meters
direct current and direct voltage
accuracy class 1.5**

housing according to **DIN 43700**

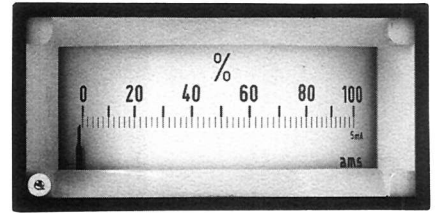
Available housing types:



Pr 72 x 36



Pr 96 x 48



Pr 144 x 72

	Pr 72 x 36	Pr 96 x 48	Pr 144 x 72
Front frame	72 x 36 mm	96 x 48 mm	144 x 72 mm
Scale length approx.	46 mm	61 mm	103 mm
Weight approx.	0.1 kg	0.3 kg	1.2 kg

Movement

Bearing

Pointer

Mounting version

Housing

Front frame

moving coil with core magnet (immune to magnetic fields)

pivot with spring-loaded jewel

beam-type knife-edge pointer

choose from **horizontal** or **vertical** mounting

steel sheet, black-painted

black, grey on request

Measuring ranges

Ammeters

Internal resistance / ΔU

Voltmeters

	Pr 72 x 36	Pr 96 x 48	Pr 144 x 72	
50 μ A	4800 Ω	3900 Ω	6000 Ω	100 mV
100 μ A	3500 Ω	840 Ω	6000 Ω	150 mV
150 μ A	1500 Ω	590 Ω	2900 Ω	400 mV
250 μ A	550 Ω	460 Ω	1300 Ω	600 mV
400 μ A	220 Ω	145 Ω	380 Ω	1 V
600 μ A	95 Ω	75 Ω	170 Ω	1.5 V
1 mA	35 Ω	30 Ω	110 Ω	2.5 V
1.5 mA	18 Ω	20 Ω	40 Ω	4 V
2.5 mA	10 Ω	7 Ω	17 Ω	6 V
4 mA	4 Ω	3 Ω	10 Ω	10 V
6 mA	3.5 Ω	2.4 Ω	10 Ω	15 V
10 mA	2.5 Ω	2.2 Ω	6 Ω	25 V
15 mA	2.2 Ω	2 Ω	4 Ω	40 V
20 mA	2.0 Ω	2 Ω	1.5 Ω	60 V
25-600 mA	60 mV	60 mV	60 V	100 V
1 A	60 mV	60 mV	60 V	150 V
1.5 A	60 mV	60 mV	60 V	250 V
2.5 A	60 mV	60 mV	60 V	900 V
4 A	60 mV	60 mV	60 V	500 V
6 A	60 mV	60 mV	60 V	600 V
10 A	60 mV	60 mV	60 V	
4 - 20 A	12 Ω	12 Ω	12 Ω	
60 mV x)	12 Ω	12 Ω	12 Ω	

Ri approx.
1000 Ω /V

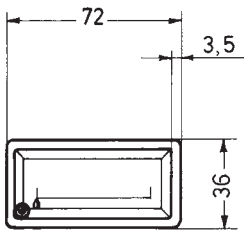
x) for operation with a separate shunt

tolerance of the internal resistance $\pm 20\%$

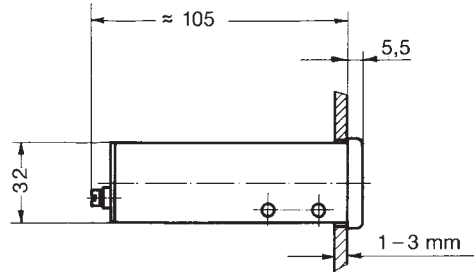
RECTANGULAR PANEL METERS

Rectangular Panel Meters

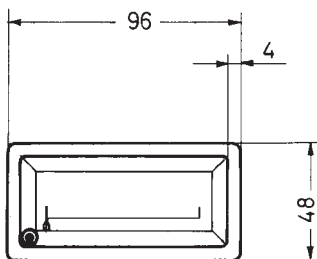
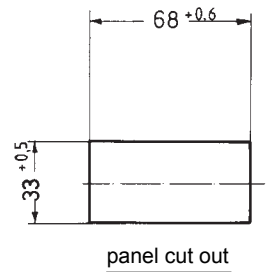
Edgewise moving coil meters



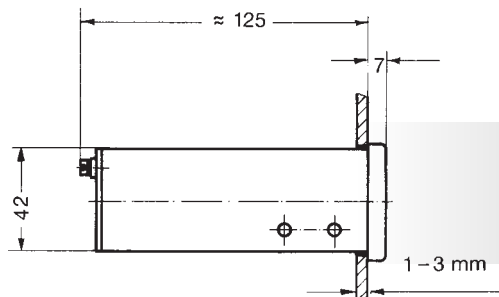
PR 72x36



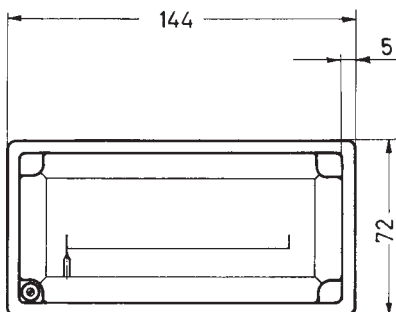
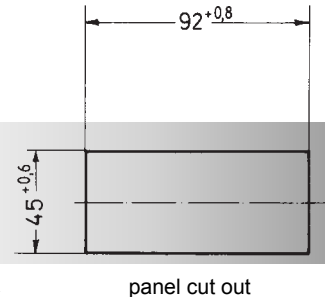
spring fixing acc. to
DIN 43 853, Form A



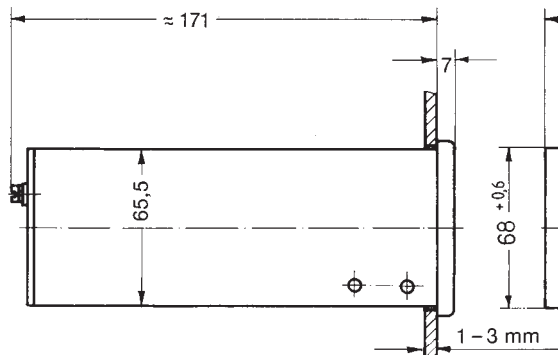
PR 96x48



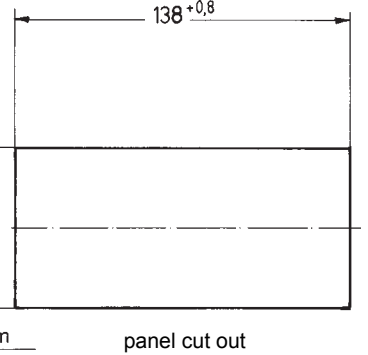
spring fixing acc. to
DIN 43 853, Form A



PR 144x72



spring fixing acc. to
DIN 43 853, Form A



RECTANGULAR PANEL METERS

Rectangular Panel Meters

**Slim-line moving coil meters
direct current and direct voltage
accuracy class 1.5**

housing according to **DIN 43700**

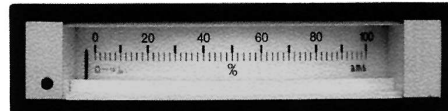
Available housing types:



Pr 48 x 24



Pr 72 x 24



Pr 96 x 24/W

scale changeable from front

	Pr 48 x 24	Pr 72 x 24	Pr 96 x 24
Front frame	48 x 24 mm	72 x 24 mm	96 x 24 mm
Scale length approx.	32 mm	48 mm	60 mm
Weight approx.	0.08 kg	0.1 kg	0.15 kg

Movement

Bearing

Pointer

Mounting version

Housing

Front frame

moving coil with core magnet (immune to magnetic fields)

pivot with spring-loaded jewel

beam-type pointer

choose from **horizontal** or **vertical** mounting

polycarbonate

black, grey on request

RECTANGULAR PANEL METERS

Measuring ranges

Ammeters

Internal resistance / ΔU

Voltmeters

Pr 48 x 24 Pr 72 x 24 Pr 96 x 24

50 μ A	4500 Ω	4500 Ω	4500 Ω	100 mV
100 μ A	3800 Ω	3800 Ω	3800 Ω	150 mV
150 μ A	3800 Ω	3800 Ω	3800 Ω	400 mV
250 μ A	1300 Ω	1300 Ω	1300 Ω	600 mV
400 μ A	1100 Ω	1100 Ω	1100 Ω	1 V
600 μ A	380 Ω	380 Ω	380 Ω	1.5 V
1 mA	70 Ω	70 Ω	70 Ω	2.5 V
1.5 mA	30 Ω	30 Ω	30 Ω	4 V
2.5 mA	13 Ω	13 Ω	13 Ω	6 V
4 mA	5 Ω	5 Ω	5 Ω	10 V
6 mA	5 Ω	5 Ω	5 Ω	15 V
10 mA	3 Ω	3 Ω	3 Ω	25 V
15 mA	2.8 Ω	2.8 Ω	2.8 Ω	40 V
20 mA	2.3 Ω	2.3 Ω	2.3 Ω	60 V
25-600 mA	60 mV	60 mV	60 mV	100 V
1 A	—	—	—	150 V
1.5 A	—	—	—	250 V
2.5 A	—	—	—	400 V
4 A	—	—	—	500 V
6 A	—	—	—	
10 A	—	—	—	
4 - 20 A	120 Ω	120 Ω	120 Ω	
60 mV x)	12 Ω	12 Ω	12 Ω	

Ri approx.
1000 Ω /V

x) for operation with a separate shunt

tolerance of the internal resistance $\pm 20\%$

ams

Automatische Mess- und
Steuerungstechnik GmbH

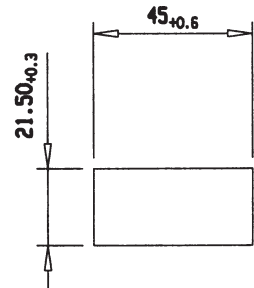
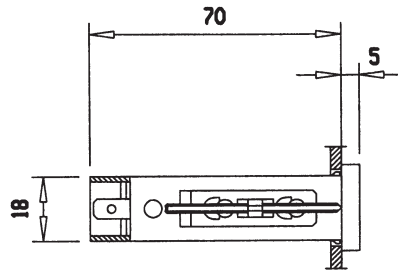
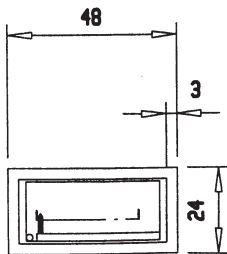
91275 Auerbach · Enge Gasse 1
91270 Auerbach · Postfach 1180

Phone +49 (0)96 43 / 92 05-0
Fax +49 (0)96 43 / 92 05-90

Internet: www.ams-messtechnik.de
e-mail: info@ams-messtechnik.de

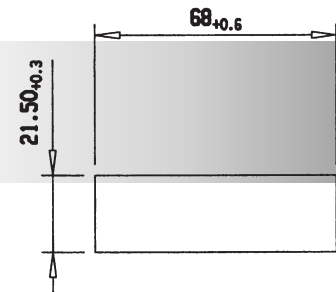
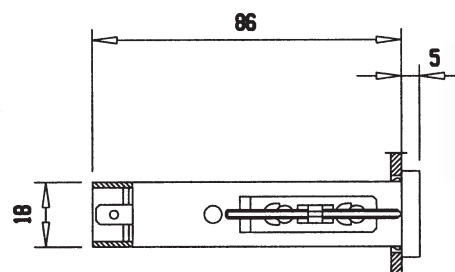
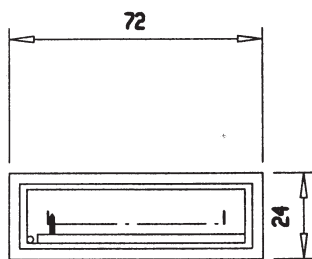
Rectangular Panel Meters

Slim-line moving coil meters



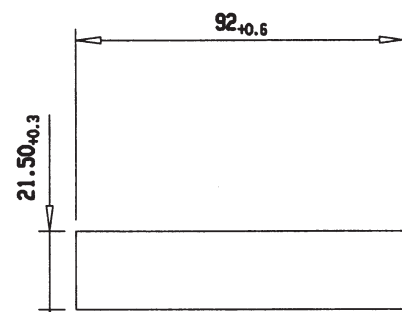
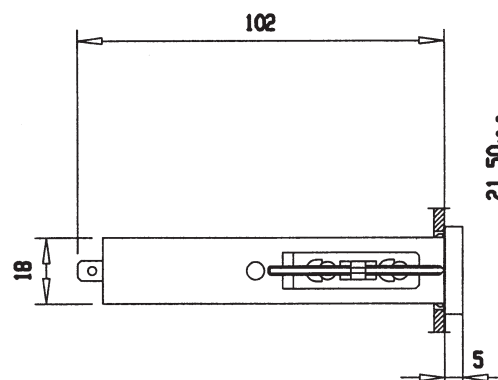
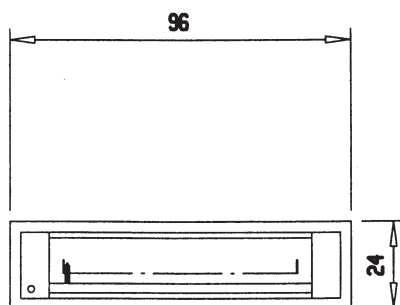
PR 48 x 24

Suitable for mosaic-grid mounting



PR 72 x 24

Suitable for mosaic-grid mounting



PR 96 x 24/W

Suitable for mosaic-grid mounting
Easy scale change from front

RECTANGULAR PANEL METERS

Rectangular Panel Meters

Special Designs

Edgewise Moving Coil Meters

Slim-Line Moving Coil Meters

Housing

Front frame colour	standard: black special colour: grey
Front glass	Pr 72 x 36, Pr 96 x 48, Pr 144 x 72 anti-glare glass
Scale illumination	Pr 96 x 24/W

Scales

Coloured scales	scale background black, scale division and numbering white or yellow coloured scale divisions or marks
Division	double division for Pr 72 x 36, Pr 96 x 48, Pr 144 x 72 calibration in different parameter than the measured electrical value

Movement

Internal resistance voltmeter	standard approx. 1000 Ω/V special versions: 2000 Ω/V 5000 Ω/V 10,000 Ω/V
Rectifier (for measuring AC)	voltmeter 6 - 600 V ammeter up to 20 mA built-in, from 1 to 20 A with separate current transformer n/0.01 A