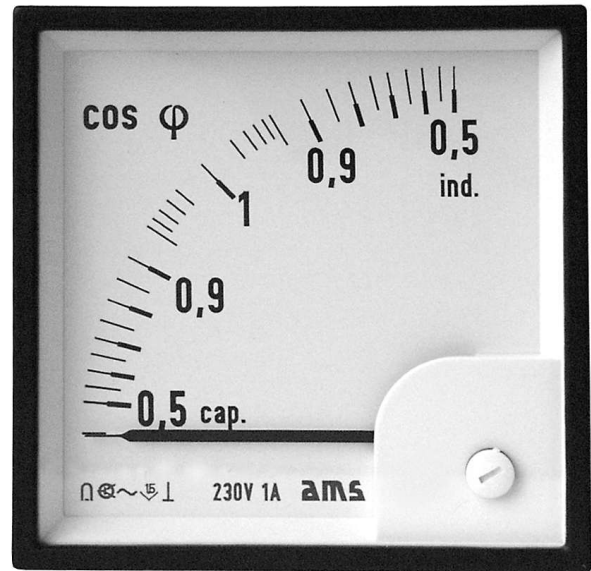
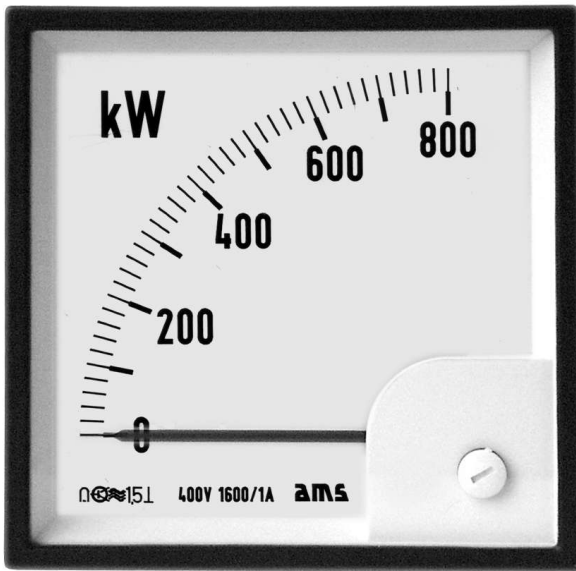


Square Panel Meters



Active power meters Reactive power meters Power-factor meters

- ☐ Moving coil movement with power converter
- ☐ Power meter with staggered zero position for import and export
- ☐ Scale division for power meters almost linear

Square Panel Meters

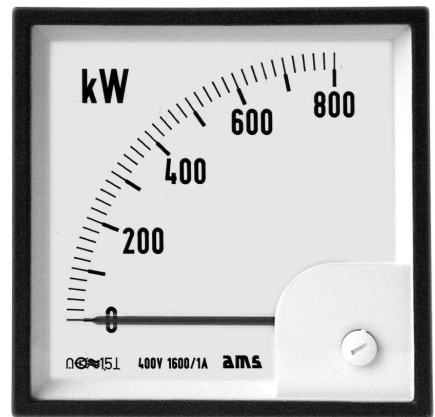
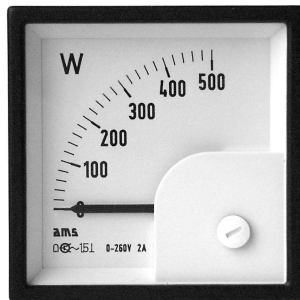
Active power meters

Reactive power meters

Accuracy class 1.5

housing according to **DIN 43700**

Available housing types:



	DQ/E/W 72-R, DQ/E/W 72 R-2 DQ/E/W 72 R-1, DQ/E/W 72 R-3	DQ/E/W 96-R, DQ/E/W 96 R-2 DQ/E/W 96 R-1, DQ/E/W 96 R-3	DQ/E/W 144-R, DQ/E/W 144 R-2 DQ/E/W 144 R-1, DQ/E/W 144 R-3
Front frame	72 x 72 mm	96 x 96 mm	144 x 144 mm
Scale length approx.	62 mm	86 mm	140 mm
Weight approx.	0.3 kg/0.5 kg	0.3 kg/0.6 kg	0.8 kg/1.0 kg

SQUARE PANEL METERS

Movement

moving coil movement with power converter
scale 90°

Bearing

pivots with spring mounted jewel

Pointer

beam-type knife-edge pointer

Housing

polycarbonate, steel-sheet for size 144

Front frame

black, grey on request

Frequency range

45 ... 50 ... 60 Hz

Internal consumption

current path max. 0.5 VA

voltage path max. 4 VA

Type

DQ/E/W 72-R

DQ/E/W 96-R

DQ/E/W 144-R

DQ/E/W 72 R-1

DQ/E/W 96 R-1

DQ/E/W 144 R-1

DQ/E/W 72 R-2

DQ/E/W 96 R-2

DQ/E/W 144 R-2

DQ/E/W 72 R-3

DQ/E/W 96 R-3

DQ/E/W 144 R-3

Power grid

single phase AC

three-wire three-phase AC,
balanced load

three-wire three-phase AC,
unbalanced load

four-wire three-phase AC,
unbalanced load

Nominal voltage

100 V

230 V

100 V

230 V

400 V

100 V

230 V

400 V

57.8 / 100 V

127 / 220 V

230 / 400 V

Nominal current

1 A or

5 A

1 A

or

5 A

1 A

or

5 A

1 A

or

5 A

Meters can be identified by '/W' for active power an '/B' for reactive power.



Automatische Mess- und
Steuerungstechnik GmbH

91275 Auerbach · Enge Gasse 1
91270 Auerbach · Postfach 1180

Phone +49 (0)96 43 / 92 05-0
Fax +49 (0)96 43 / 92 05-90

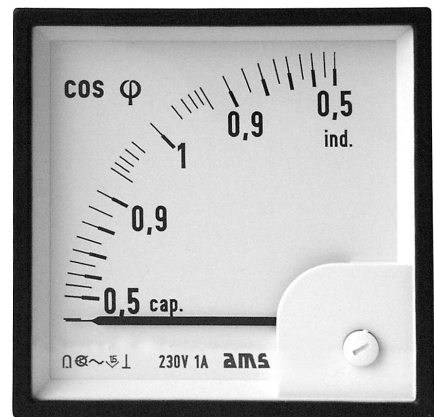
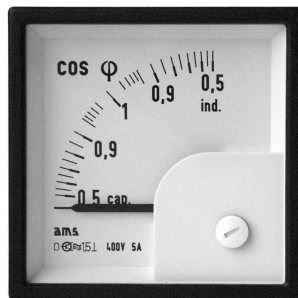
Internet: www.ams-messtechnik.de
e-mail: info@ams-messtechnik.de

Square Panel Meters

Power-factor meters Accuracy class 1.5

housing according to **DIN 43700**

Available housing types:



	CPhQ/E 72	CPhQ/E 96	CPhQ/E 144
Front frame	72 x 72 mm	96 x 96 mm	144 x 144 mm
Scale length approx.	64 mm	86 mm	140 mm
Weight approx.	0.5 kg	0.5 kg	1.0 kg

Movement

moving coil movement with power converter
scale 90°

Bearing

pivots with spring mounted jewel

Pointer

beam-type knife-edge pointer

Housing

polycarbonate, steel-sheet for size 144

Front frame

black, grey on request

Frequency range

50 ... 60 Hz

Internal consumption

current path approx. 1 VA
voltage path approx. 3 VA

Measuring range

Power grid

Nominal voltage

Nominal current

CAP 0.5-1-0.5 IND

single-phase AC,
balanced load

230 V

1 A or
5 A

CAP 0.5-1-0.5 IND

three-phase AC,
balanced load

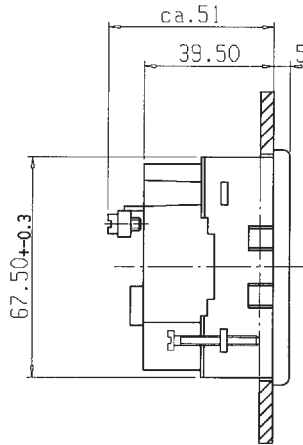
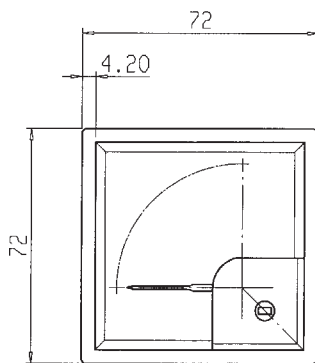
100 V
230 V
400 V

1 A
or
5 A

SQUARE PANEL METERS

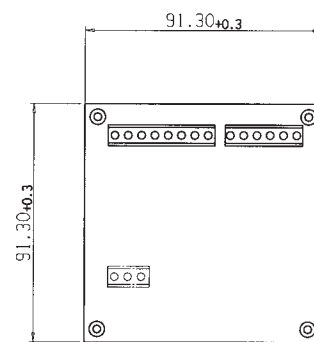
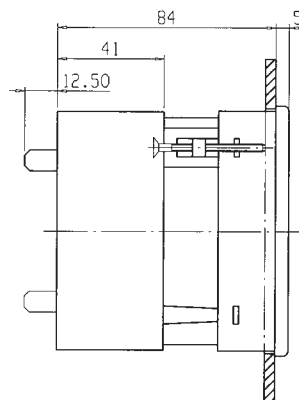
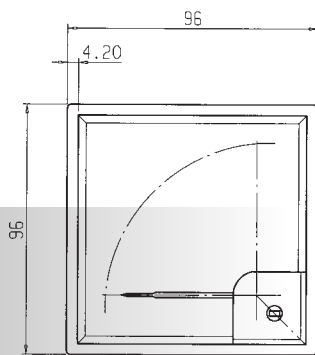
Square Panel Meters

Active power meters
Reactive power meters

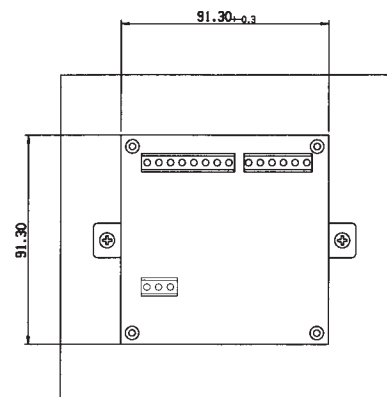
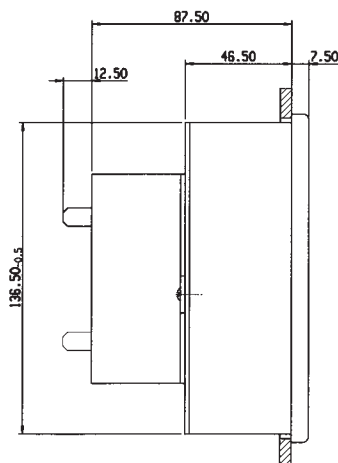
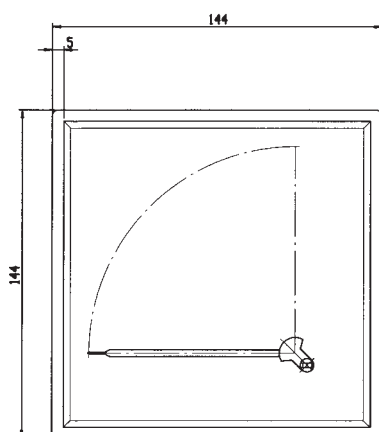


with additional separate
measuring accessory
91.3 x 91.3 x 43.6 mm

DQ/E/W 72



DQ/E/W 96



DQ/E/W 144

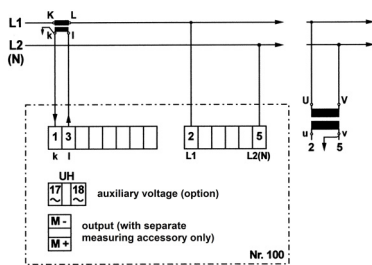
SQUARE PANEL METERS

Square Panel Meters

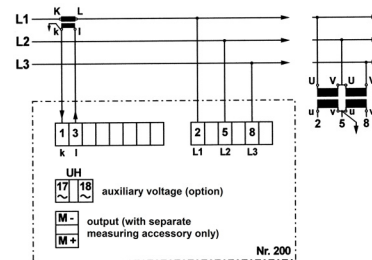
Active power meters Reactive power meters

Circuit diagrams

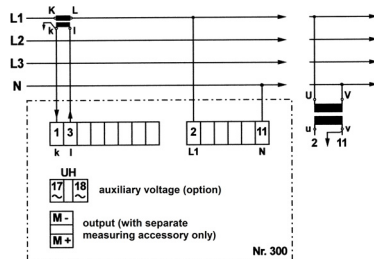
single-phase AC,
active or reactive power



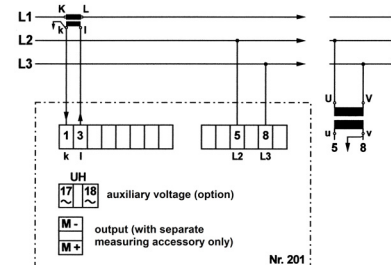
three-wire three-phase AC, balanced load,
active power



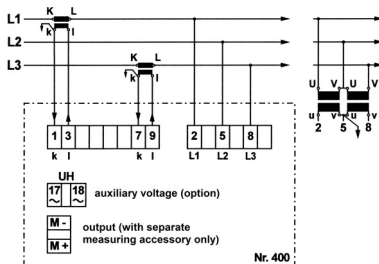
four-wire three-phase AC, balanced load,
active power



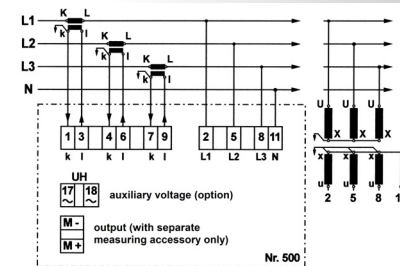
three-/four-wire three-phase AC, balanced load,
reactive power



three-wire three-phase AC, any load,
active or reactive power



four-wire three-phase AC, any load,
active or reactive power



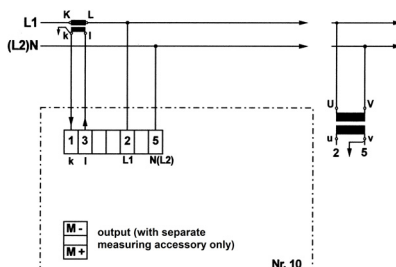
Important notice:

- Option: auxiliary voltage (UH) only necessary if nominal voltage fluctuates more than $\pm 20\%$
- Option: output (M-, M+) with separate measuring accessory only

Attention: no galvanic separation to the voltage inputs!

Power-factor meter

connection to single-phase AC



connection to three-wire three-phase AC, balanced load

