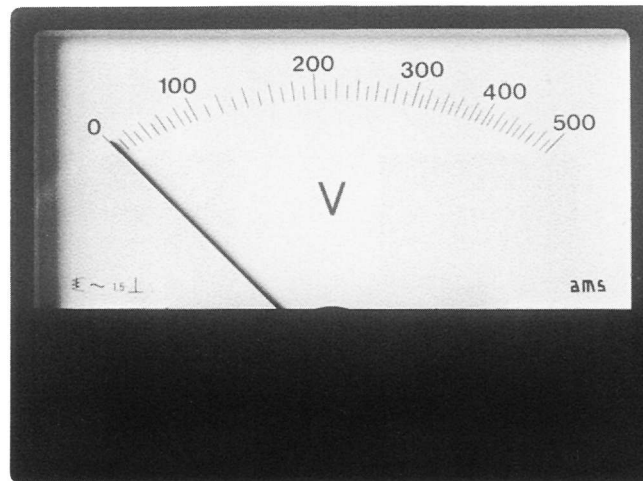


The Moving Iron Instruments of the "Interserie"

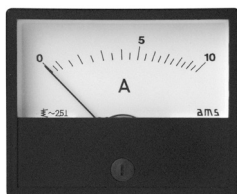


- ☐ utilize pivot, spring and jewel movements with magnetic shielding.
- ☐ are available in 4 different housing sizes for up to 5 built-in variations.
- ☐ have interchangeable slide-in scales by default.
- ☐ are available with translucent scale (for external illumination) or with built-in illumination tube.
- ☐ have a pointer deflection of 90°.
- ☐ are available with accuracy class 1.5 or 2.5.

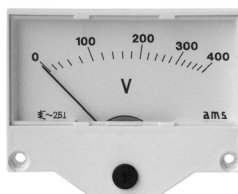
Size 60

Interserie Moving Iron Meter with interchangeable scale

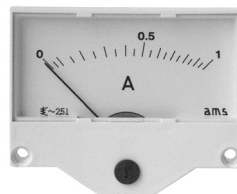
Available housings:



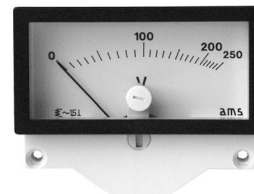
AB 60 DE



UB 60 DE



EB 60 DE



URB 60 DE

Movement

**Bearing
Pointer**

Accuracy class

Scale length

Front frame colour

moving iron, silicone damped
and screened against magnetic fields
pivots with spring mounted jewel
tube pointer
1.5 or 2.5
approx. 48 mm
dark grey, similar to RAL 7011
on demand lightgrey or black

Measuring ranges

Ammeters

100 / 200 mA
150 / 300 mA
250 / 500 mA
400 / 800 mA
600 / 1200 mA
1 / 2 A
1.5 / 3 A
2.5 / 5 A
4 / 8 A
6 / 12 A
10 / 20 A
15 / 30 A
25 / 50 A

for connection to separate
current transformer

sec. 1 / 2 A
or 5 / 10 A

Voltmeters

10 V
15 V
25 V
30 V
40 V
60 V
100 V
150 V
250 V
300 V
400 V
500 V

for connection to separate
voltage transformer

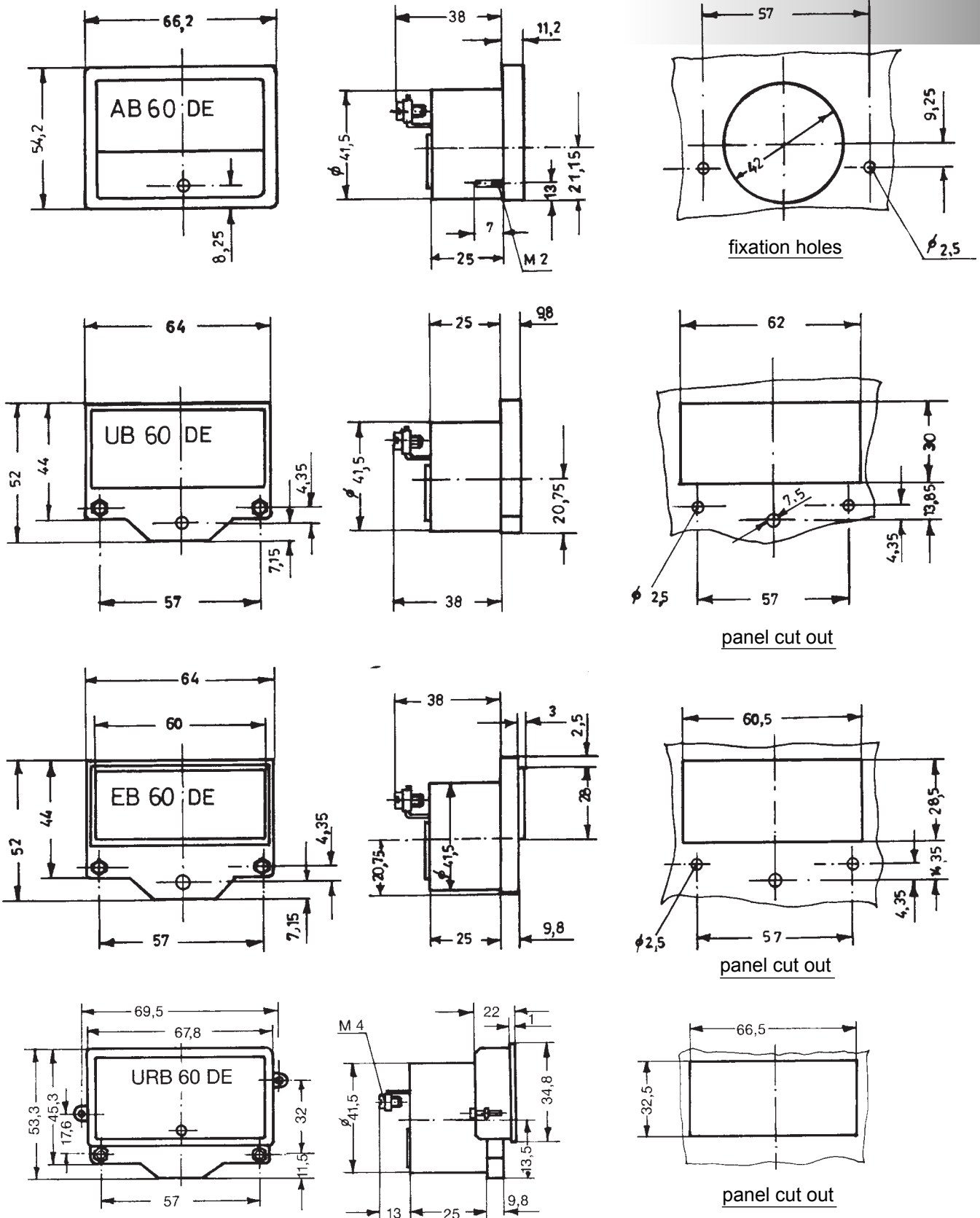
sec. 100 V
or 110 V

Ammeters also available without overload scaling

Size 60

Moving Iron Meter

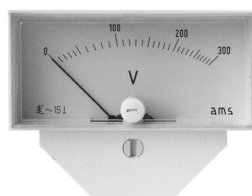
"INTERSERIE" METERS



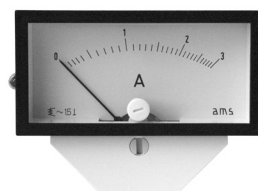
Size 75

Interserie Moving Iron Meter with interchangeable scale

Available housings:



EB 75 DE I - III
built-in type



URB 75 DE
submounting type

Movement

Bearing

Pointer

Accuracy class

Scale length

URB-frame

moving iron, silicone damped
and screened against magnetic fields
pivots with spring mounted jewel
tube pointer or beam-type knife-edge pointer
1.5 or 2.5
approx. 53 mm
black
on demand lightgrey or black

Measuring ranges

Ammeters

100 / 200 mA
150 / 300 mA
250 / 500 mA
400 / 800 mA
600 / 1200 mA
1 / 2 A
1.5 / 3 A
2.5 / 5 A
4 / 8 A
6 / 12 A
10 / 20 A
15 / 30 A
25 / 50 A
40 / 80 A

for connection to separate
current transformer

sec. 1 / 2 A
or 5 / 10 A

Voltmeters

10 V
15 V
25 V
30 V
40 V
60 V
100 V
150 V
250 V
300 V
400 V
500 V
600 V

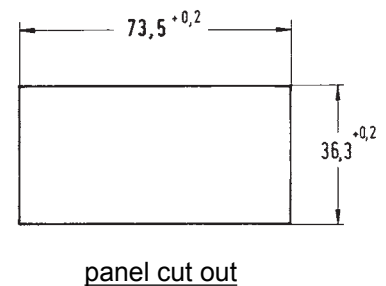
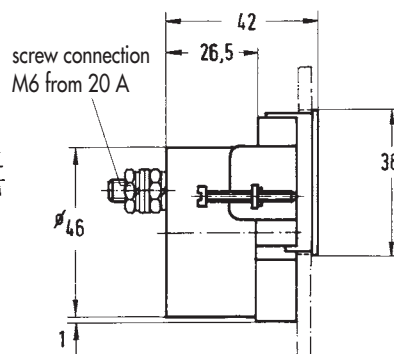
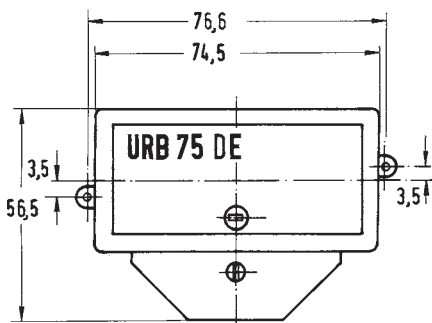
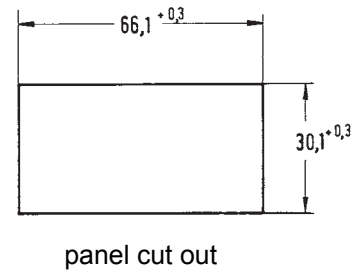
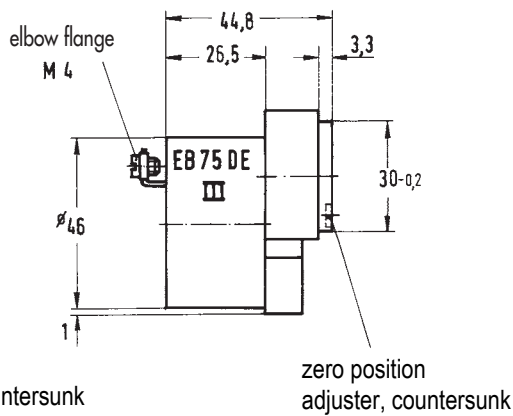
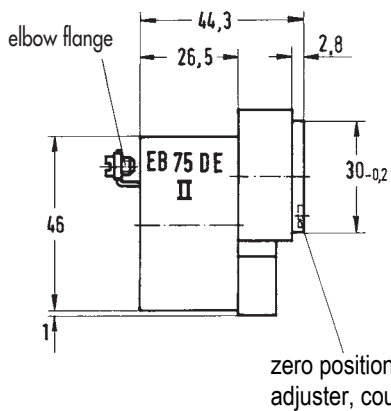
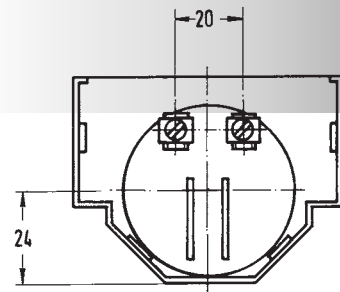
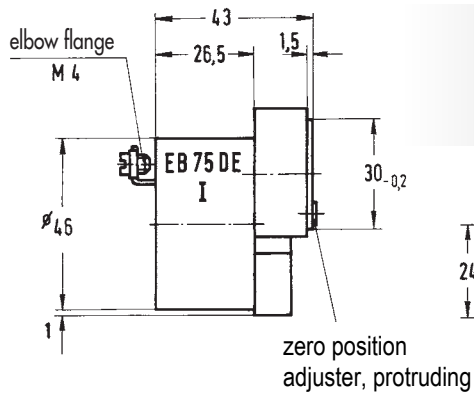
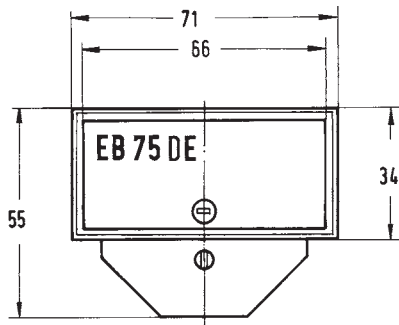
for connection to separate
voltage transformer

sec. 100 V
or 110 V

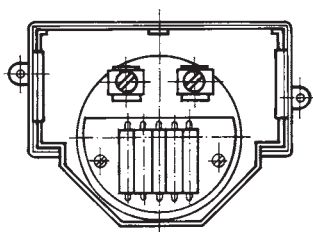
Ammeters also available without overload scaling

Size 75

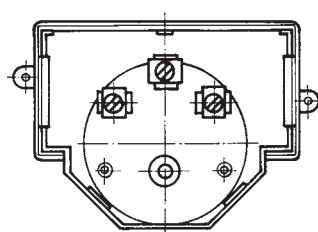
Moving Iron Meter



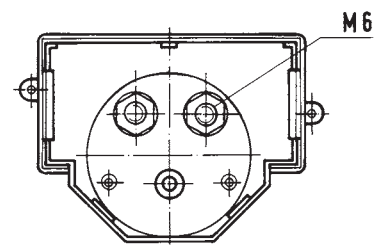
preresistor
moving iron voltmeter



meter with two
measurement ranges



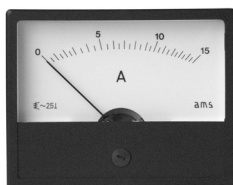
ammeter from 20 A



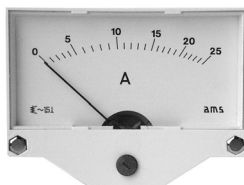
Size 80

Interserie Moving Iron Meter with interchangeable scale

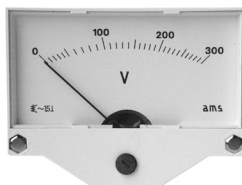
Available housings:



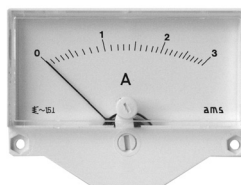
AB 80 DE



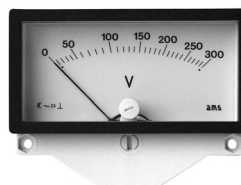
UB 80 DE



EB 80 DE



EBN 80 DE



URB 80 DE

Movement

moving iron, silicone damped
and screened against magnetic fields

Bearing

pivots with spring mounted jewel

Pointer

tube pointer or beam-type knife-edge pointer

Accuracy class

1.5 or 2.5

Scale length

approx. 55 mm

Front frame colour

dark grey, similar to RAL 7011

URB-frame

on demand lightgrey or black
black

Measuring ranges

Ammeters

100 / 200 mA
150 / 300 mA
250 / 500 mA
400 / 800 mA
600 / 1200 mA
1 / 2 A
1.5 / 3 A
2.5 / 5 A
4 / 8 A
6 / 12 A
10 / 20 A
15 / 30 A
25 / 50 A
40 / 80 A

for connection to separate
current transformer

sec. 1 / 2 A
or 5 / 10 A

Voltmeters

10 V
15 V
25 V
30 V
40 V
60 V
100 V
150 V
250 V
300 V
400 V
500 V
600 V

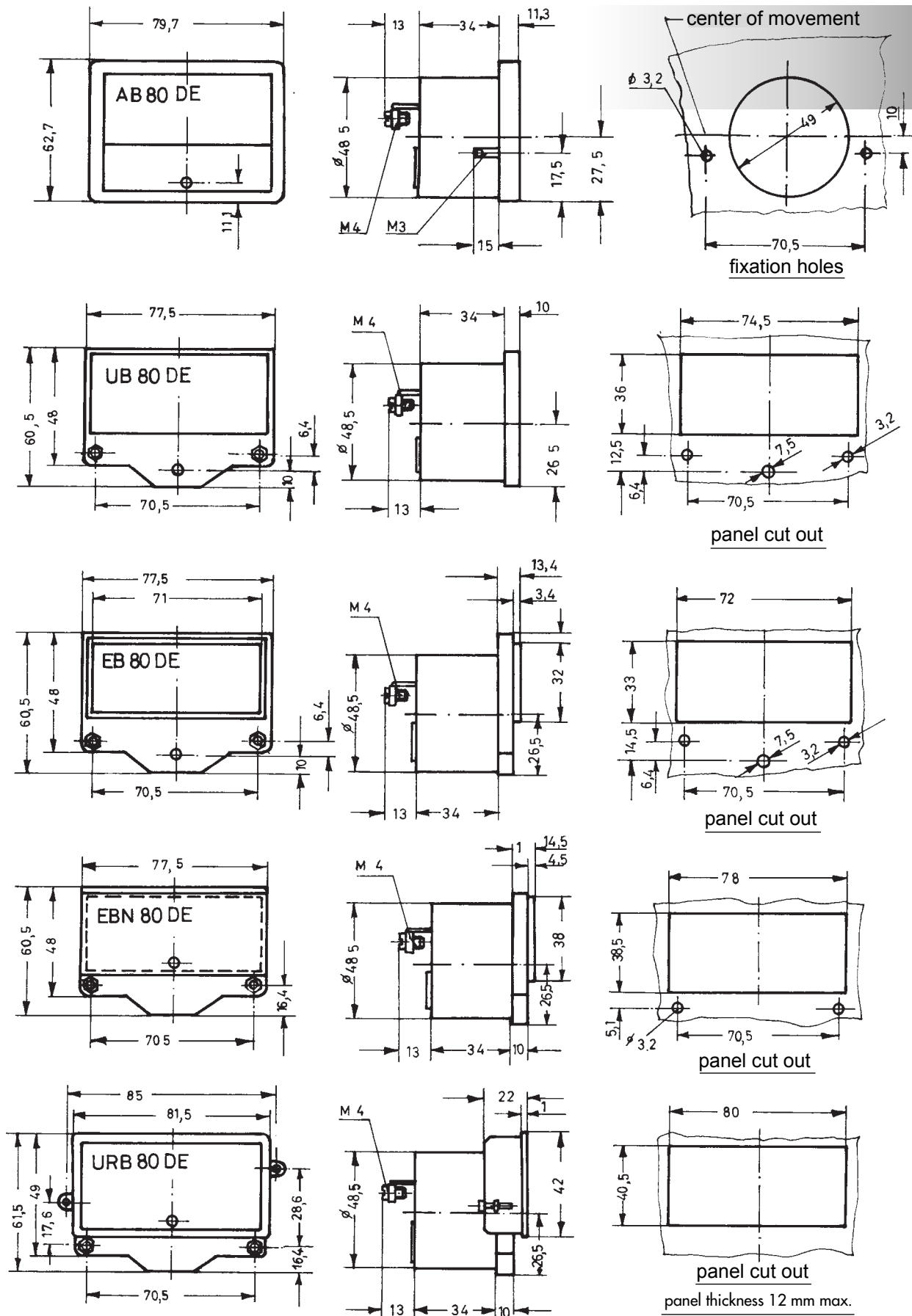
for connection to separate
current transformer

sec. 100 V
or 110 V

Ammeters also available without overload scaling

Size 80

Moving Iron Meter

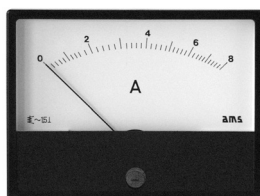


"INTERSERIE" METERS

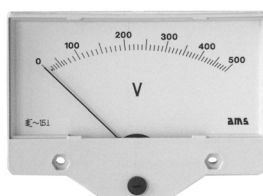
Size 96

Interserie Moving Iron Meter with interchangeable scale

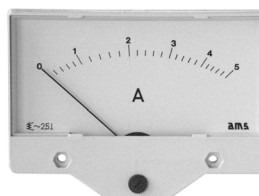
Available housings:



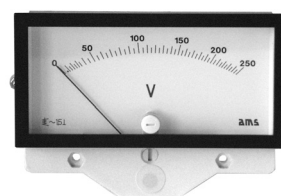
AB 96 DE



UB 96 DE



EB 96 DE



URB 96 DE

Movement

Bearing

Pointer

Accuracy class

Scale length

Front frame colour

URB-Frame

moving iron, silicone damped
and screened against magnetic fields
pivots with spring mounted jewel
tube pointer or beam-type knife-edge pointer
1.5 or 2.5
approx. 80 mm
dark grey, similar to RAL 7011
on demand lightgrey or black
black

Measuring ranges

Ammeters

100 / 200 mA
150 / 300 mA
250 / 500 mA
400 / 800 mA
600 / 1200 mA
1 / 2 A
1.5 / 3 A
2.5 / 5 A
4 / 8 A
6 / 12 A
10 / 20 A
15 / 30 A
25 / 50 A
40 / 80 A

Voltmeters

10 V
15 V
25 V
30 V
40 V
60 V
100 V
150 V
250 V
300 V
400 V
500 V
600 V

for connection to separate
current transformer

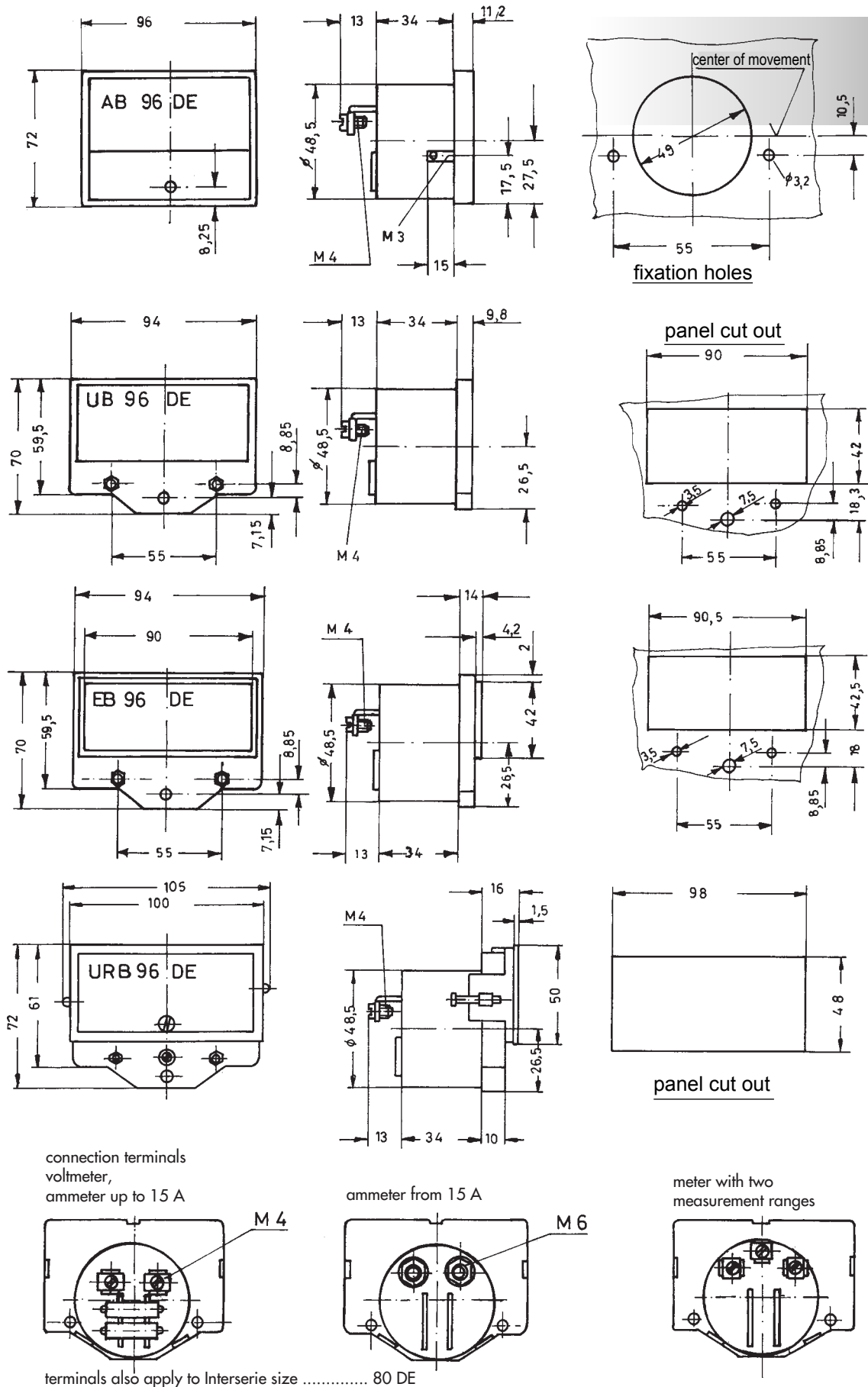
sec. 1 / 2 A
or 5 / 10 A

for connection to separate
voltage transformer

sec. 100 V
or 110 V

Ammeters also available without overload scaling

Size 96 Moving Iron Meter



"INTERSERIE" METERS

Special Versions

Interserie Moving Iron Meters

Housing

Front frame colours

AB-version: standard: dark grey
on demand: black or light grey
URB-version: standard: black
on demand: light grey

Diodes hole

Connection terminals

in housing bottom part and scale face
tab connectors 6.3 mm for voltmeters
and ammeters up to 6 A

Scales

Mirror scale

Coloured scale

for size 60 - 80 - 96 combined with knife-edge pointer
scale background black, scale division and numbering white or yellow
other colours on request
coloured scale divisions or marks

Movements

2 measurement ranges

ammeter size 75, 80 and 96
voltmeter size 75, 80 and 96

Overload scales

size 60 - twofold (standard)
size 80 und 96 - fivefold (up to 25 A directly)

Frequency

standard 16 $\frac{2}{3}$ - 100 Hz
special versions 100 - 400 Hz